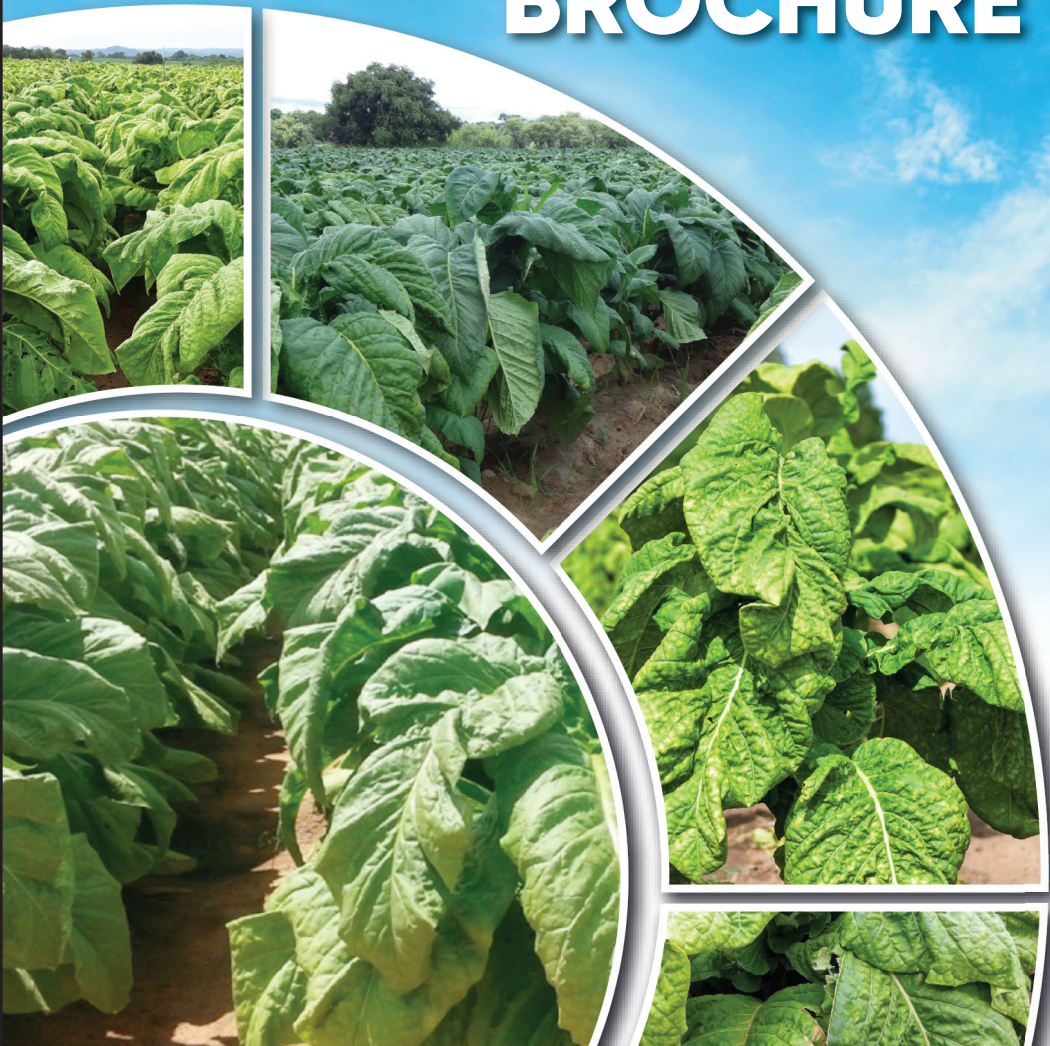




TOBACCO VARIETY BROCHURE



✉ sales@kutsaga.co.zw

☎ 0714980980

Call: +263 868 800 2604

🌐 kutsaga.co.zw

Regional Sales: 0718 581 408/0718 530 111/0718 581 399/0718 581 390/0775 985 339/0772 804 426

📘 📺 🌐 📷 📱 @KutsagaResearch

OPEN RELEASE FLUE-CURED TOBACCO

VARIETY and GROWING AREA DESCRIPTION RIPENING RATE YIELD POTENTIAL QUALITY					DISEASE RESISTANCE		GENERAL COMMENTS
					RESISTANT TO:	SUSCEPTIBLE TO:	
Kutsaga RK1	Similar to KE1 with longer leaves	Medium to fast	Medium – high	Deep orange styles similar to KE1	WM, [3]	WF-1, TMV, ANG-1, GW, BS [5]	Lower reapings slightly prone to guinea fowl spot. Fairly drought tolerant due to big fibrous root system. this makes stalk destruction difficult
Kutsaga 30R	Short plant with pale green large leaves	Slow	medium	Deep lemon to orange styles	WF- 0, ALT, GW, RK, BS, TMV [6]	WM, WF-0, ANG-1 [3]	Inadequate nitrogen, reaping green or curing too fast will produce pale, slick, grey, dull tobacco. Frogeye/barn spot can be excessive in fast growing seasons. May be prone to weather fleck, leaf drop and guinea fowl spot can be minimized by coloring at a high temperature (and high humidity, to avoid setting green)
Kutsaga 35	Tall plant with wide crinkly leaves	slow	high	Mostly orange – lemon styles	WF-1, ANG 1, ALT, BS [6]	WF-1, ANG-1, ALT, BS [6]	Ideal for early irrigated crops. late plantings should be avoided. May be difficult to establish under very dry conditions. Prone to early flowering and profuse suckering. Produces good leaf if it is well fertilized, reaped ripe and cured correctly. Frogeye/ barn spot may be excessive in fast growing seasons. Prone to water soaking, and to firing of leaf tips due to potassium: nitrogen imbalance.
Kutsaga 36	Similar to KM10 with wider leaves	medium	Medium – high	Very good quality clear lemon similar to KM10	WM, WF-0, TMV, ANG-1, BS [6]	ALT, RK	Similar to Kutsaga 35
Kutsaga 37	Similar to KE1 with longer leaves	slow	high	Predominantly orange leaf	WM, WF-0, ALT [3]	WF-1, ANG, GW, BS [6]	May be used under the same conditions of Kutsaga 35. Does not display the early profuse, vigorous suckering of Kutsaga 35 and is not as susceptible to frogeye
K KR 22	Related to KM10 but is a bigger plant and better RK resistance	Medium – fast	Medium – high	Bright, thin and predominantly lemon grades	WF-1, ANG1, TMV, ALT, RK, BS [8]	GW [1]	Fairly drought tolerant. Heavy soils and over-fertilization should be avoided, as leaves can be unmanageably big and difficult to cure. Lower reapings slightly prone to guinea fowl spot
KRK 26	Hybrid with the easy handling of K326	medium	Medium – high	Soft, clean, stretchy and predominantly lemon grades	WF-1, ANG-1, RK	ALT, TMV, FE [3]	Fairly drought tolerant. Maybe brittle and prone to leaf breakage which can be aggravated by excessive nitrogen and extreme topping. Lower reapings may be prone to guinea fowl spot.
KRK 26 R	Hybrid with the easy handling of K326	medium	Medium – high	Soft, clean, stretchy predominantly lemon	WF-1, TMV, ANG-1, RK, BS, GW [8]	ALT, FE [2]	Similar to Kutsaga RK 26 but with TMV resistance.



OPEN RELEASE FLUE-CURED TOBACCO

VARIETY and GROWING AREA DESCRIPTION RIPENING RATE YIELD POTENTIAL QUALITY					DISEASE RESISTANCE		GENERAL COMMENTS
					RESISTANT TO:	SUSCEPTIBLE TO:	
KRK 27	Medium size plant with close internodes	fast	medium	Soft, Lemon style	WM, WF-0, WF-1, TV, ANG-1, RK, BS [7]	ALT, GW [2]	Uniform and early germination in seedbeds. Compact appearance. Fast growing and early ripening. Good uniform curing
KRK 28	Compact plant with broad leaves and short internodes	Very slow	high	Predominantly deep lemon to orange cured leaf	WM, WF-0, WF-1, ANG-1, ALT, RK, BS [7]	[2]	Very slow growth in seedbeds and early growth phase. Tolerates drought conditions well and is not prone to water soaking and potassium firing. Late planting is not encouraged as this variety grows slowly and may not reach its full potential within the legislated growth period. Lower reapings may be prone to guinea fowl spot.
KRK 29	Compact plant with short internodes and wide/rounded crinkly leaves	Very slow	high	Deep lemon to orange styles, slightly prone to guinea fowl spot	RK, WF-0, WF-1, ALT, ANG-1, BS [6]	WM, GW, TMV [3]	Should be sown 2-3 weeks earlier for the same planting date. Very slow in the seedbeds and will need extra nitrogen. Very drought tolerant.
KRK 64	Average sized plant with well expanded leaves and close internodes	slow	high	Deep lemon to orange styles	WM, WF-0, WF-1, ANG-1, ALT, RK, BS [7]	GW,TMV[2]	Slower in the seedbeds and may need extra nitrogen. Fairly drought tolerant and must be well fertilized to avoid pale leaf.
KRK 66	Plant has average internodes with with crinkly leaves	slow	high	Soft, clean, mostly lemon style with some orange	WM, WF-0, WF-1, TMV, ANG-1, ALT, RK, BS, GW [9]		Recommended on heavier soils, second year land and situations were angular and /or Alternaria is a problem and land which is Oto be second year in the following season. NOT suitable for poor sandy soils. Re- growth is difficult to destroy. Prone to scotch under moisture stress
KRK 71	Tall plant with close internodes and large pointed dark green leaf	slow	high	Deep orange-mahogany	WM, WF-0, WF -1, TV, ANG-1, RK, BS [7]	ALT, GW [2]	Germinates uniformly in seedbeds. Establishes well in field. Top early for good top growth. Comparable to KRK 26.
KRK 72	Tall plant with close internodes and broad rounded crinkly leaves	Medium to slow	high	Soft, clean, deep lemon to orange	WM, WFO, WF-1, TV, ANG-1, ALT, RK, BS [8]	GW [1]	Requires extra nitrogen in the seedbed and field. Exhibits good top growth. comparable to T66
K RK 70	Long broad leaves which can be said to be "whitish green".	Moderate ripening rate ~medium maturity	High yield potential	Deep lemon-orange cures	WM, WF-0, WF-1, TMV, GW, ALT, RK, ANG-1 [7]	ANG -2, PVY	-Quick germinating and fast growing -Very easy to manage especially in the seedbeds -Suitable as an irrigated and dry land crop



OPEN RELEASE FLUE-CURED TOBACCO

VARIETY AND GROWING AREA DESCRIPTION RIPENING RATE YIELD POTENTIAL QUALITY					DISEASE RESISTANCE		GENERAL COMMENTS
					RESISTANT TO:	SUSCEPTIBLE TO	
K RK73	Relatively short statured plant with narrow long leaves like those of KRK 26 R. Leaves T73 are darker than those of KRK 26R.	Ripens very slowly and has very high holding capacity	High yield potential	Deep lemon - orange cures	WM, WF-0, WF-1, ANG-1, ALT, RK, BS, GW, TMV [9]	ANG -2, PVY	-Does not flush at the top like KRK26R. -Suitable for both irrigated and dry land crops. -Alternative to KRK26R with high yield potential and better leaf holding capacity -Quick germinating and fast growing -Very easy to manage especially in the seedbeds -Suitable as an irrigated and dry land crop
K RK74	Rounded crinkly leaves of moderate size. The plants have relatively long internodes such that it looks taller than KRK 66 when both are topped at 18 leaves	Late maturing - slow ripening	High yield potential	Lemon styles	WM, WF-0, WF-1, ANG-1, TMV, ALT, RK, BS, GW [8]	ANG -2, PVY	-Similar to KRK66 -Good holding capacity -Higher nematode resistant than KRK 66 -Less prone to water soaking like KRK 66 -Leaves do not break easily during harvesting or under strong winds like KRK66
K RK75	Dark green plant with shiny thick and heavy leaves.	Late maturing - slow ripening	High yield potential	Orange to mahogany styles	WM, WF-0, WF-1, ANG1, TMV, ALT, RK, BS, GW [8]	ANG-2, PVY	Similar to KRK71-higher nematode resistance than the KRK 66 - slow ripening character like KRK 66 -Dark green, broad, shiny and heavy body leaves -High capacity to rebound after drought -Performs well even under late land prep situations compared to other
K RK76	Relatively pale in color at vegetative development. Big broad and pointed leaves.	Medium maturity and medium to slow ripening	High yield potential	Strikingly lemon cures	WM, WF-0, WF-1, ANG-1, TMV, ALT, RK, BS, GW [8]	ANG-2, PVY	-Heavy bodied, compact stature with close internodes. Germinates relatively quicker in seedbeds than K RK66 -Suitable for dryland cropping with medium to slow ripening character -Enhanced foliar disease resistance especially to Alternaria. -Light /pale leaves which are long and broad hence termed 'mile long' leaf
LIMITED RELEASE FLUE-CURED TOBACCO VARIETIES (Developed for the hot and dry (marginal) areas)							
T78	Dark green, broad leaves with good top growth	Fast to very fast growing, medium ripening	Medium	Lemon to deep lemon cures	WM, WF-0, WF-1, ANG-1, TMV, ALT, RK, BS, GW [8]	ANG-2, PVY	Developed for production in marginal areas (non-tobacco growing regions) characterized by low rainfall, high temperatures and very dry. -Quick growth attaining 18 leaves (topping) in 6-8 weeks after planting. - ripens slowly and
T79	Tall, compact plant with long pointed leaves	Fast to very fast growing, medium ripening	Medium	Bright lemon cures	WM, WF-0, WF-1, ANG-1, TMV, ALT, RK, BS, GW [8]	ANG-2, PVY	Developed for production in marginal areas (non-tobacco growing regions) characterized by low rainfall, high temperatures and very dry. -Quick growth attaining 18 leaves (topping) in 6-8 weeks after planting. -High root knot nematode resistance -May be prone to potassium firing



K RK72

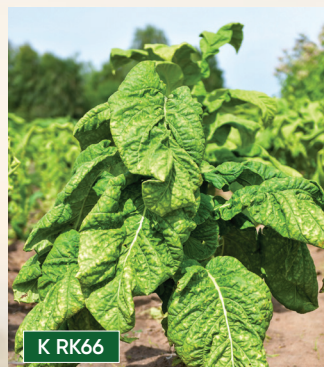
OPEN RELEASE FLUE-CURED TOBACCO

VARIETY and GROWING AREA DESCRIPTION RIPENING RATE YIELD POTENTIAL QUALITY					DISEASE RESISTANCE		GENERAL COMMENTS
					RESISTANT TO:	SUSCEPTIBLE TO:	
T80	Tall, vigorous plant with long internodes, long leaves. Dark green leaves	Medium to fast ripening	Medium	Orange to mahogany styles	WM, WF-0, WF-1, ANG-1, TMV, ALT, RK, BS, GW [8]	ANG -2, PVY	Developed for production in marginal areas (non-tobacco growing regions) characterized by low rainfall, high temperatures and very dry. - Quick growth attaining 18 leaves (topping) in 6-8 weeks after planting. -High leaf holding capacity -May be affected by sun scorch
	Quick germination in seedbeds, Short compact plant with broad light green leaves	Very fast to fast growing and ripening	Medium	Deep lemon to orange cures	WM, WF-0, WF-1, ANG-1, TMV, ALT, RK, [8]	ANG -2, PVY	Developed for production in marginal areas (non-tobacco growing regions) characterized by low rainfall, high temperatures and very dry. -High root knot nematode resistance -Does not flush at the top - High root knot nematode resistance
T 60	Short internodes and wide, rounded crinkly leaves	medium	high	Clean deep lemon styles		Very drought tolerant. Prone to potassium fring. Must be well fertilized as the leaf may become pale	
					WF-QWF-1, ALT, ANG-1, BS [7]	[2]	
T 65	Plant has wide rounded crinkly leaves with average internodes	Very slow	high	Deep lemon to orange styles	WF-1, TV, ANG-1, ALT, RK, BS [8]	GW [1]	Very drought tolerant. Prone to potassium fring. Must be well fertilized as the leaf can be pale.

The very slow ripening varieties such as K RK28, K RK29 and K RK64 can also be grown in the slow growing regions but farmers have to plant them early in the season to allow a long growing and ripening period. In the seedbeds, these varieties should be sown two weeks earlier than other standard varieties



K RK75



K RK66



K RK76